



References and extra

The source and significance of consonant-intrinsic pitch New evidence from Danish

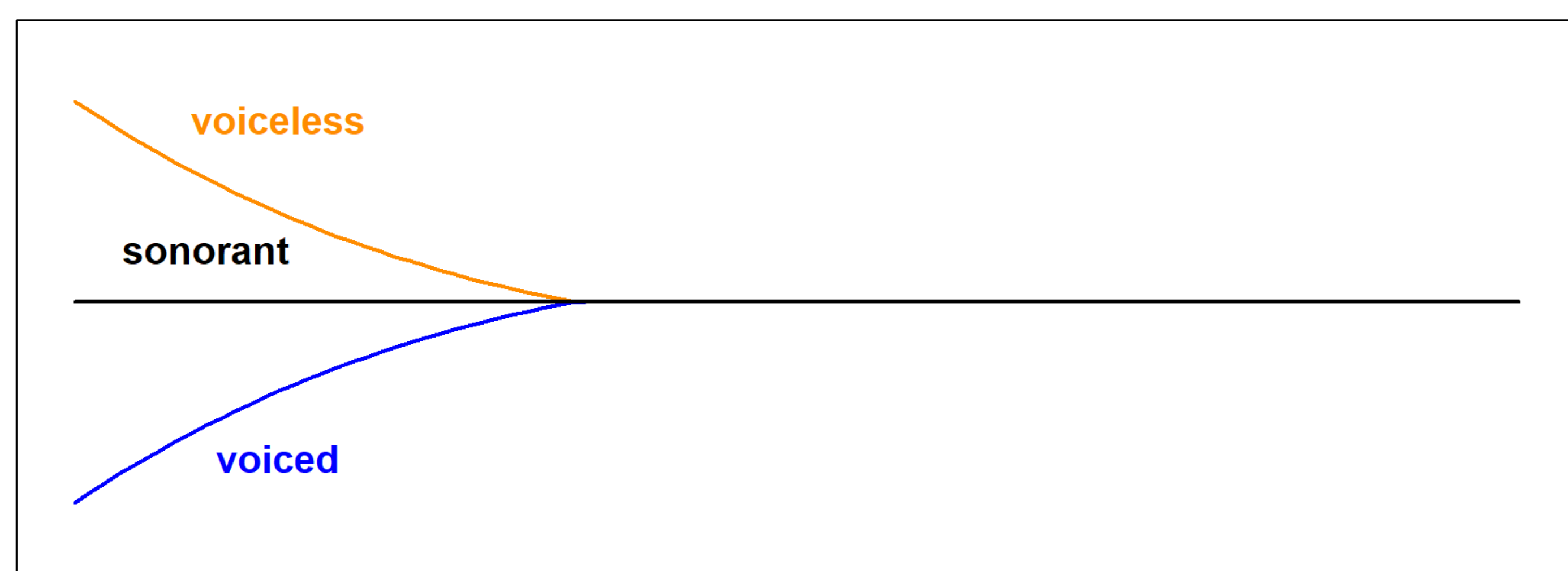


Rasmus Puggaard-Rode, James Kirby & Nicolai Pharao

Institute for Phonetics and Speech Processing, LMU Munich || Department of Nordic Studies and Linguistics, University of Copenhagen

Consonant (co-)intrinsic pitch

Laryngeal contrasts in obstruents sometimes exert a localized influence on pitch, often referred to as **CF0**



Open questions

What is the source of CF0?

- **F0 lowering after underlyingly voiced obstruents** enhances [voice] feature (Kingston & Diehl 1994)
- **F0 raising after voiceless obstruents** is a biomechanical side effect of gestures that inhibit phonation
 - Generalized or specifically cricothyroid tensing (Goldstein & Browman 1986; Löfqvist et al. 1989)

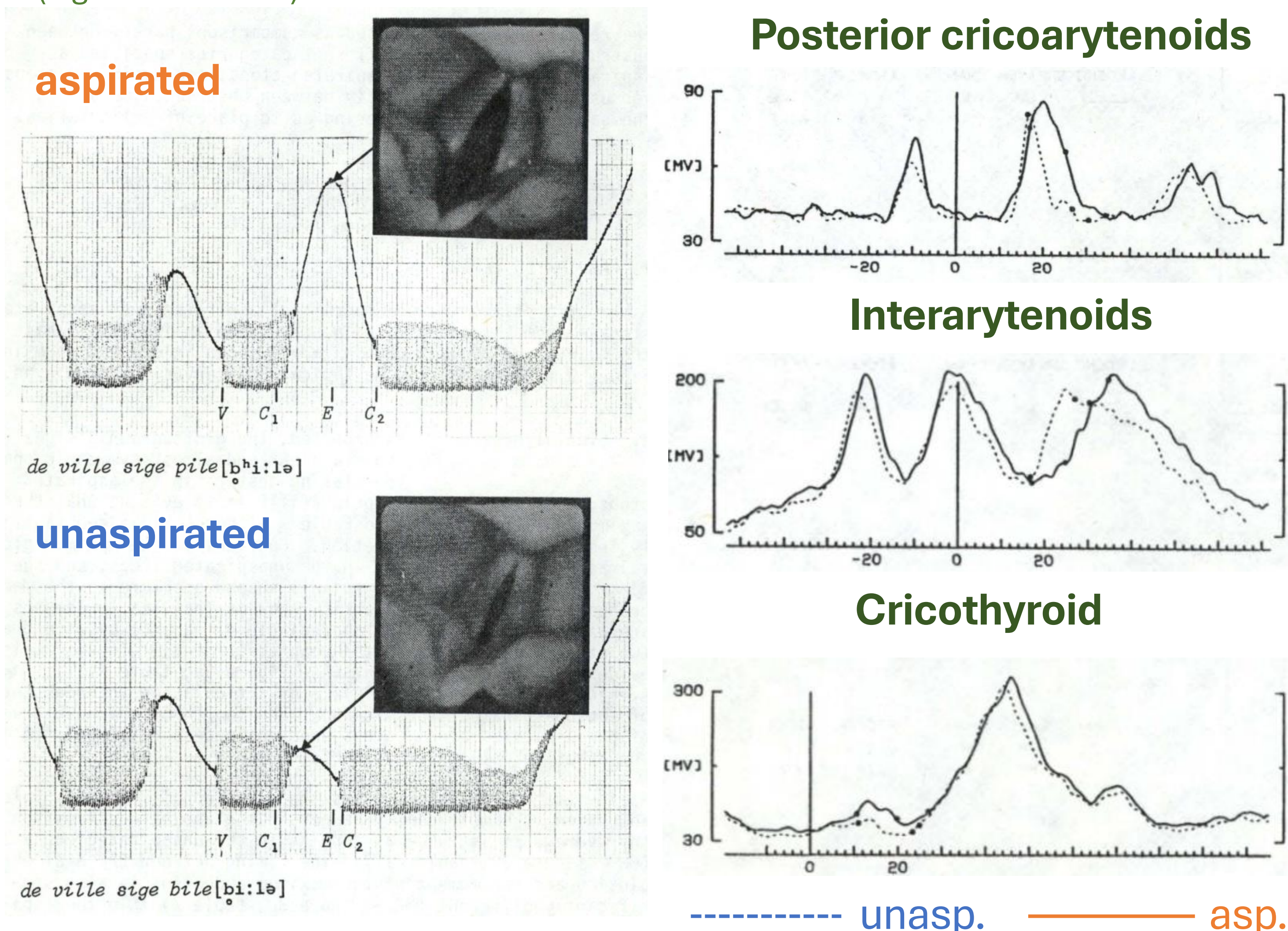
How does CF0 interact with other sources of prosodic modification?

Enter... Danish!

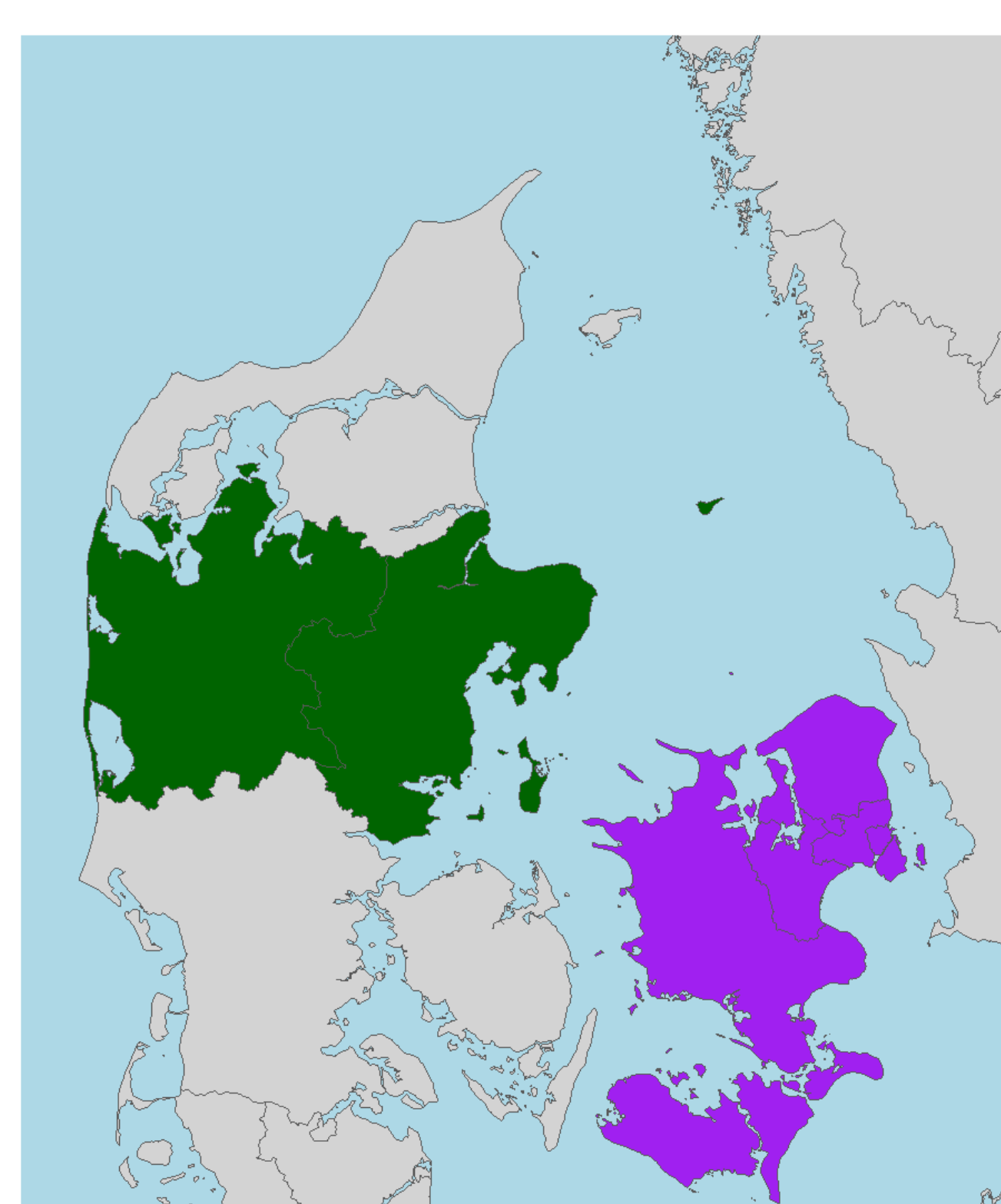
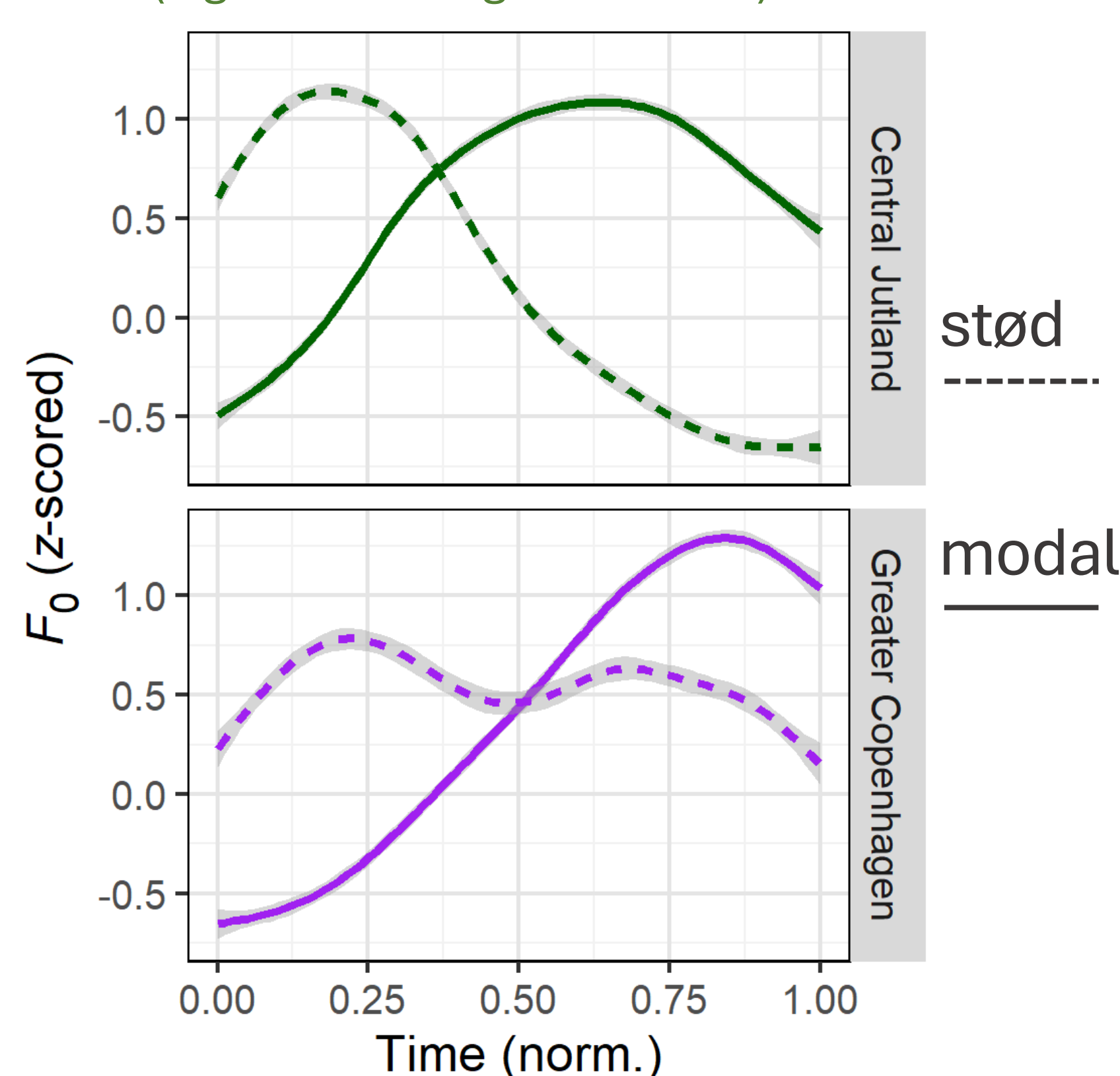
Danish contrasts two series of stops

- **Voiceless unaspirated** /b d g/ ↔ [p t k]
- **Voiceless aspirated** /p t k/ ↔ [p^h t^h k^h]

The articulatory implementation has been described in detail (e.g. Hutters 1985)



The voice quality contrast **stød** affects F0 at the syllable onset and places certain constraints on the larynx (e.g. Fischer-Jørgensen 1989)



Methods and materials

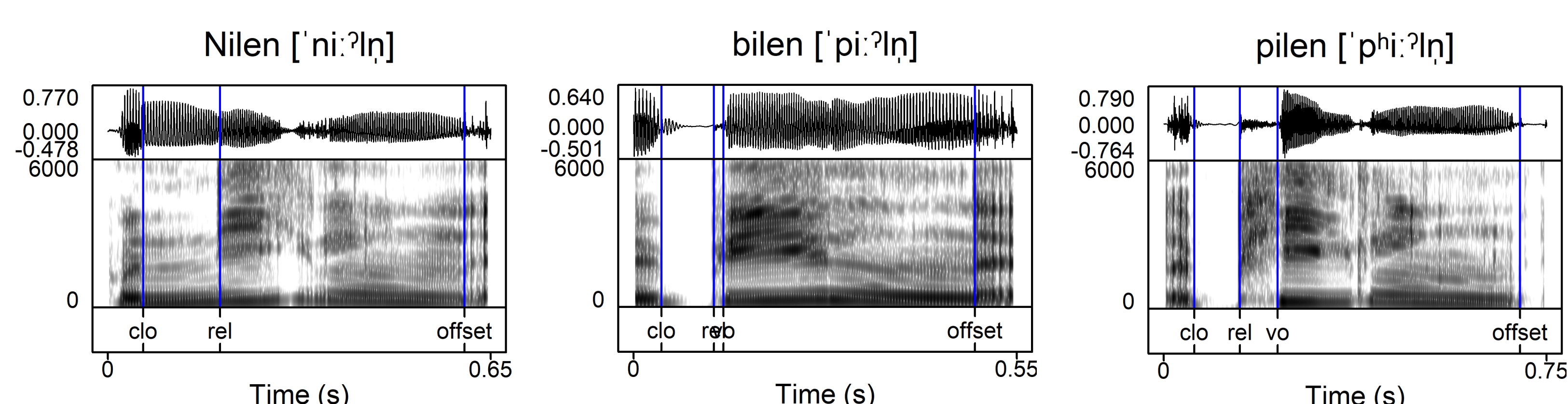
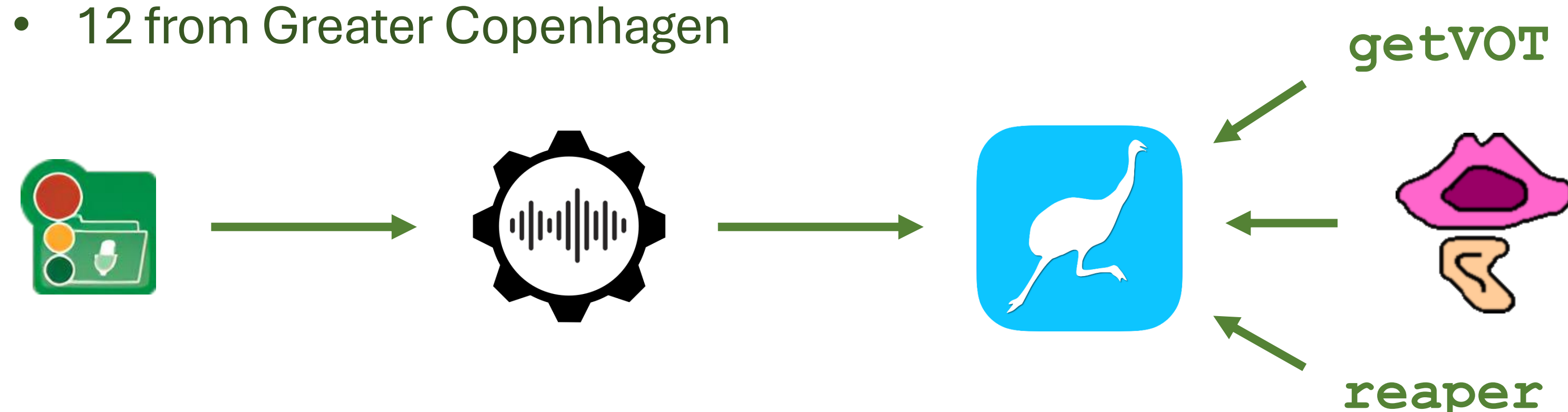
132 alternative question sentences of the form

*Er det **dine** eller er det mine?*
'are they yours or are they mine?'

alternating onset category, PoA, vowel height, and stød

31 speakers of Danish recorded in Aarhus and Copenhagen

- 17 from Central Jutland
- 12 from Greater Copenhagen



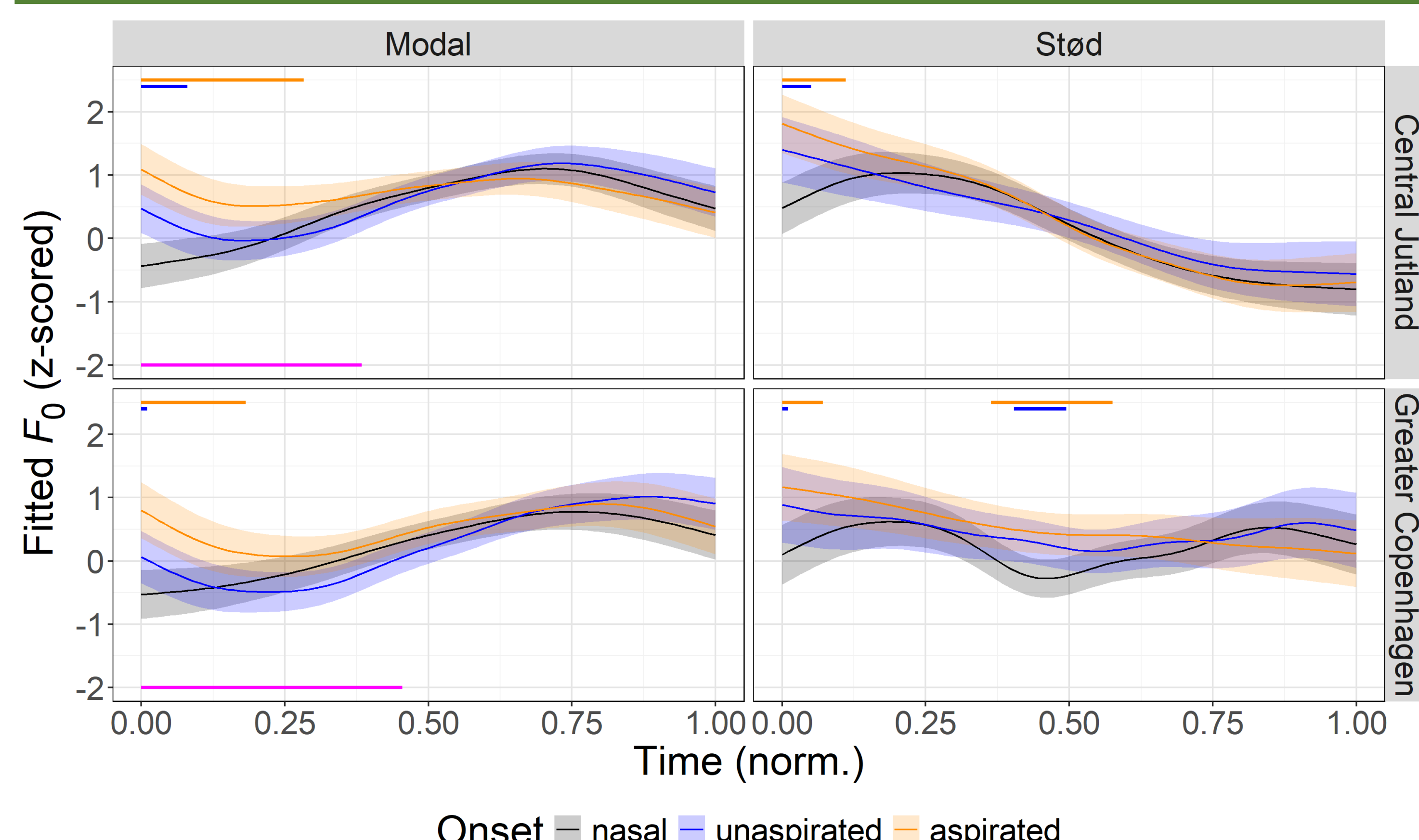
F0 analyzed in the range between **vo**-offset (time-normalized)

Statistical analysis

Data analyzed with **generalized additive mixed models** using the `bam()` function with `mgcv` in R

- Dependent variable **z-scored F0**
- Predictors
 - (parametric) **onset category** : stød : variety, vowel height
 - (non-parametric) **onset category** : stød : variety smoothed with 10k thin plate regression splines
 - (random non-parametric) **speaker | onset category** : stød, **item | variety**, 5k TP splines, 1st order difference penalty
- Scaled-*t* error distribution, discretized values for covariates
- AR(1) error model following e.g. Wieling et al. (2016)

Results



Discussion

What is the source of CF0?

- No evidence of F0 lowering after underlyingly voiced obstruents
- **CF0 effects** in spite of **little evidence of cricothyroid tensing**
- Results support CF0 as a **generalized biomechanical side effect of gestures that inhibit phonation**
 - Such effects are **scalar**: magnitude and temporal extent differ

Other sources of prosodic modification

- The temporal extent of CF0 is **inhibited** when there are competing demands on the larynx and pitch